

Library of Things

SEWING MACHINE

This kit includes:



EQUIPMENT

- Singer Heavy-Duty Sewing Machine, with foot controller & power cord
- Singer Mechanical Heavy-Duty Sewing Machines Extension Table
- Singer Roller Bag

ACCESSORIES

- General Purpose Foot
- Zipper Foot
- Button Sewing Foot
- Edge/Quilting Guide
- Pack of Needles
- Bobbins
- Spool Caps
- Auxiliary Spool Pin
- Spool Pin Felt
- Screwdriver
- Seam Ripper/Lint Brush
- Soft Dust Cover



SINGER

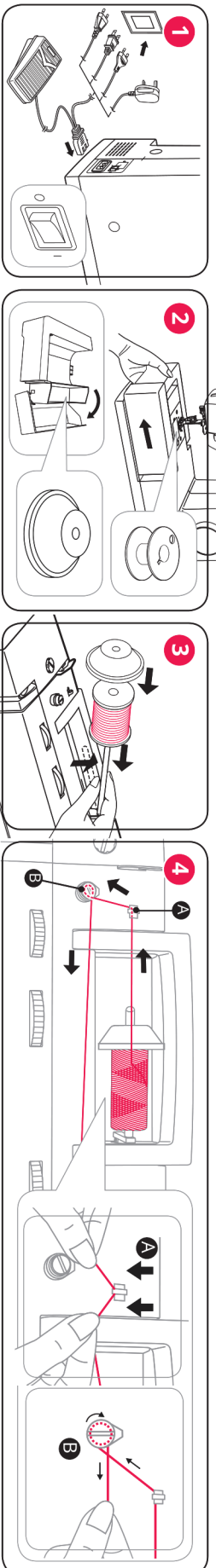
Quick Start Guide

Guide de Démarrage Rapide | Guía Rápida



1 Preparing the Machine and the Bobbin Thread

Préparation de la Machine et du Fil de Canette | Préparation de la Máquina y del Hilos de la Canilla



Everything You Need to Begin Sewing

Tout ce dont vous avez besoin pour commencer à coudre | Todo lo que necesitas para empezar a coser

For Complete Instructions, Refer to Your Instruction Manual.

For Video Instructions you can also visit our YouTube Channel: www.youtube.com/singersewingcompany, or scan the QR Code with your smart phone.



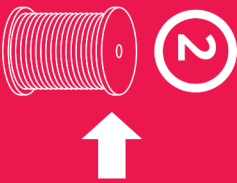
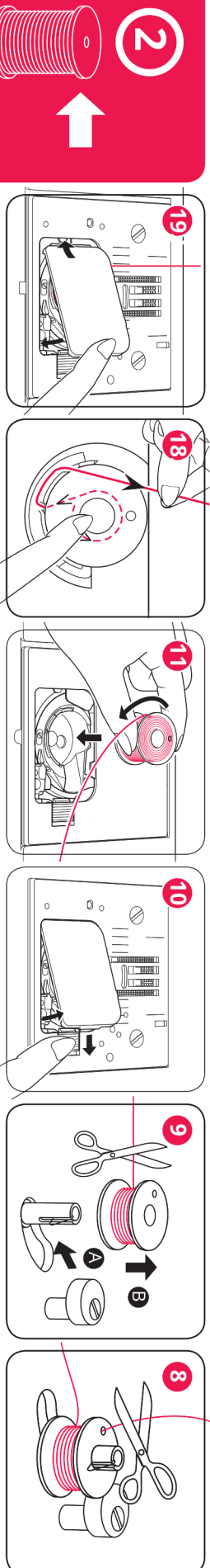
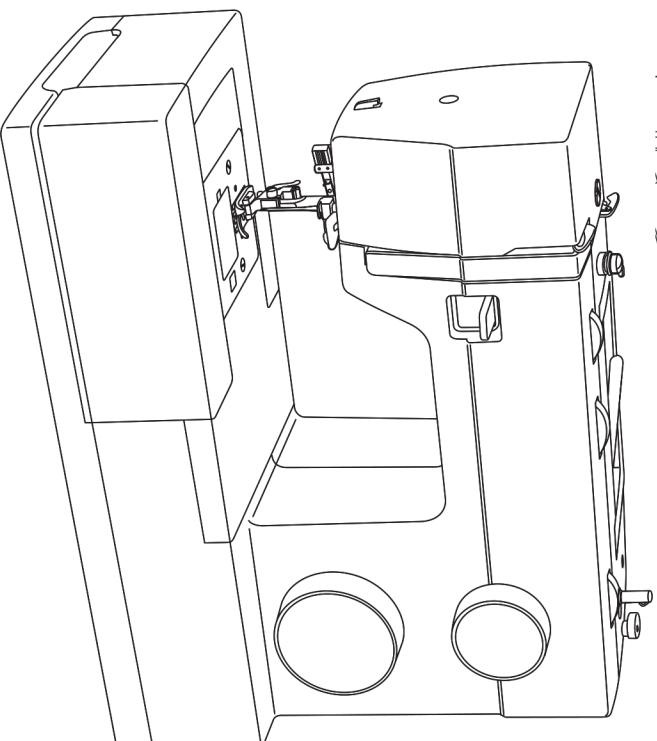
Pour Plus d'Informations, Consultez Votre Manuel d'Instruction.

Pour des instructions en vidéo, vous pouvez aussi visiter notre chaîne YouTube: www.youtube.com/singersewingcompany, ou scanner le code QR avec votre smart phone.



Para Instrucciones Más Completas, Refiérase al Manual de Instrucciones.

Para instrucciones en video puede visitar también nuestro canal en YouTube: www.youtube.com/singersewingcompany, o escanear el Código QR con su smart phone.



SINGER is sewing made easy.™



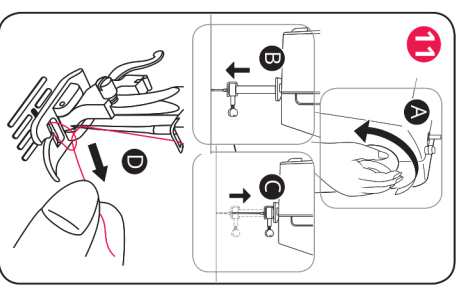
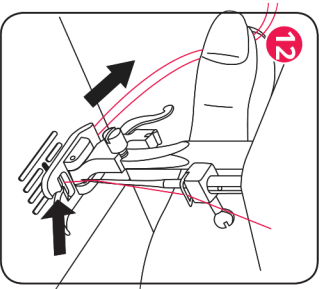
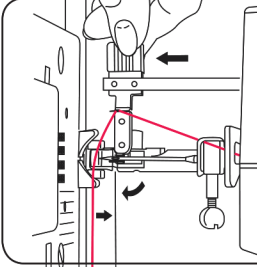
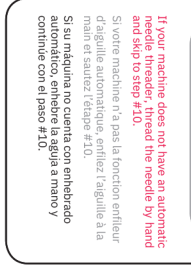
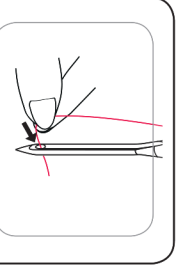
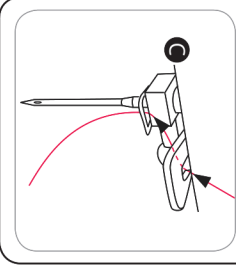
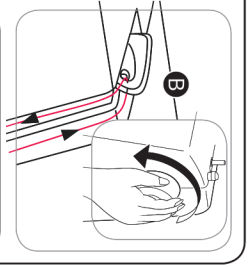
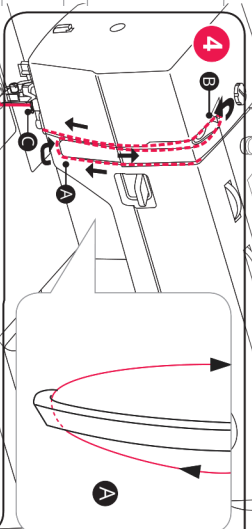
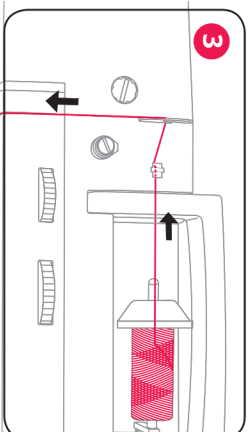
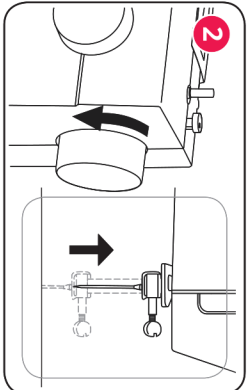
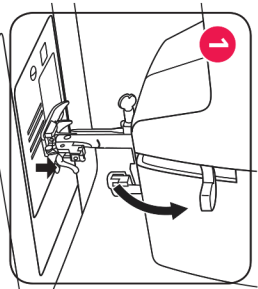
Quick Start Guide

Threading the Top Thread

2

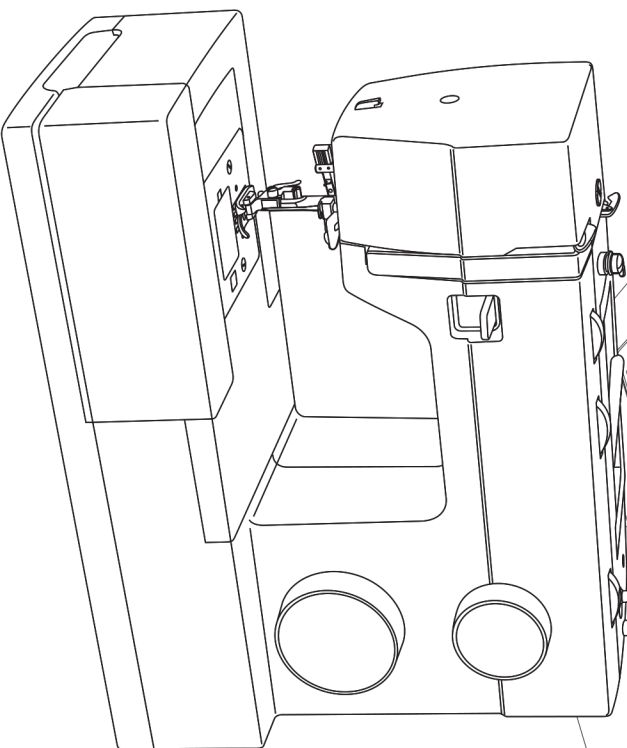


Enfilage du Fil Supérieur | Enhebrando del Hilo Superior



ALWAYS TURN THE HANDWHEEL TOWARDS YOU (COUNTER CLOCKWISE) to avoid damage to your machine.
TOUJOURS TOURNER LE VOLANT VERS VOUS (DANS LE SENS CONTRAIRE DES AIGUILLES D'UNE MONTRE) pour éviter d'endommager votre machine.
SIEMPRE GIRE EL VOLANTE HACIA USTED (EN SENTIDO CONTRARIO A LAS MANECILLAS DEL RELOJ) para evitar dañar su máquina.

ALWAYS thread the machine with the presser foot in the UP position.
TOUJOURS enfilez la machine avec le pied de biche en position HAUTE.
SIEMPRE enhebra la máquina con el prensateles en la posición ELEVADA.



Singer, the SINGER logo, Sewing Made Easy and Sewing Made Easy are exclusive trademarks of The Singer Company Limited S.A.U. or its Affiliates. All rights reserved. Le logo, le nom de marque et le slogan Sewing Made Easy sont des marques exclusives de The Singer Company Limited S.A.U. ou ses Affiliates. ©2013 The Singer Company Limited S.A.U. ou ses Affiliates. Todos los derechos reservados.

SINGER is sewing made easy.™